

[View this email in your browser](#)



Newsletter



December 2021



Merry Christmas
from everyone at



Teangacha
lar-bhunscoile Éireann
Post-Primary
Languages Ireland



#ThinkLanguages



There was an explosion of colour and celebration of languages in 150 schools nationwide this November with the fourth annual **#ThinkLanguages** event. 12,000 TY students, TY coordinators and MFL teachers across the country brought **languages** and **cultures** to life through a mix of fun **activities**, live and pre-recorded **workshops** and **talks**. [Learn More>>](#)

Don't forget the #ThinkLanguages Competitions!
Deadline: December 17th

Foreign Language Assistants



PPLI is delighted to launch the 2021-2022 FLA/CT '**Recipe for Success**' showcase. We want to celebrate the great collaboration and work carried out by FLAs and CTs around Ireland. We would like to capture the 'recipes' that **FLAs** and **MFL teachers** are using to make the Foreign Language Assistant Scheme a success.

[Learn More](#)

CLIL



PPLI has launched the latest round of **CLIL CPD** for MFL teachers. Content and Language Integrated Learning is a **pedagogical approach** that sees the **teaching** of subject content **through** a foreign language. If you are interested in applying for this year's CPD, complete the [application form](#) by December 17th. Also visit the link below.

[Learn More](#)

Open Night Toolkit



This toolkit is designed to help **encourage** incoming students to Say 'Yes' to Languages when **choosing** their **subjects** for Junior Cycle. There are a selection of **ideas**, **resources**, and bespoke **activities** and **games**, which can be done in an online context as well as face to face. Included are brochures for **parents/guardians** with information on the potential **benefits** of learning each language.

[Learn More](#)

Communities of Practice



A Special **CoP** dedicated to sharing ideas about teaching **LCA MFL** is taking place in January. During this online event, language teachers, FLAs and PMEs are invited to participate to ask **questions** and **share experiences** on teaching and learning languages in the context of LCA. Also a Special CoP for **SEN** and **MFL** Teaching and Learning is being organised for early in the new year.

[Learn More](#)

Teaching & Learning



An **Intercultural Look at our Schools Toolkit** is intended for post-primary schools in Ireland. It provides a **framework** for schools wishing to address the **intercultural dimension** in the school. It aims to raise awareness of the role students' **plurilingual** and **pluricultural identities** and **competences** play in their **learning** in a

Primary Modules



The first term of the new Primary Sampler Module began on Monday 1st November. Over **170 schools** are the **first** to participate in this new initiative to bring more languages to primary schools across the country. Primary pupils are partaking in the **six week module** in a variety of modern foreign languages and Irish Sign Language. Around 40,000

potential in all subjects.

[Learn More](#)

Resources



PPLI are continuing to develop our sets of **classroom language mats**, which **encourage communication** in the target language. The latest ones support the use of **home languages** for multilingual children and parents. The mats are available with **English** or **Gaeilge** as the link language. Also watch out for our new "**World of Work**" guide coming in January.

[Learn More](#)

Events



We have many events happening at the moment, such as **Digital Technology** webinars, **Special Communities of Practice**, an **FLA Scheme 2022/2023**

during the 2021/22 school year.

[Learn More](#)

New Curricular Languages



The State Examinations Commission has published **sample papers** and other **materials** for the four new Leaving Certificate languages (**Polish, Lithuanian, Portuguese** and **Mandarin Chinese**). Curriculum specifications and guidelines for student language **portfolios** are available, as well as a dedicated Senior Cycle page on **Languages Connect**.

[Learn More](#)

Languages Connect



Languages Connect teamed up with **MS Readathon** again this year for their annual event. Almost 12,000 participants raised almost €268K for MS Ireland by

Also the winners of the ['What's Your Story?'](#) competition were awarded recently. Know of any interesting **language** events not on our **calendar**? Email us at Info@ppli.ie.

[View More](#)

Study Abroad



PPLI has been part of the Expert Network on Recognition of outcomes of learning periods abroad in general **secondary education**, which was initiated by the European Parliament and funded by the European Commission. The project has looked at the barriers for **senior cycle students** across Europe who wish to spend between 2 and 10 months **studying abroad**. An **information pack** is available.

[Learn More](#)

language category gave children an opportunity to try out reading books in **different languages**, with two of those foreign language readers receiving an iPad in the post.

[Learn More](#)

Job Opportunity



PPLI/Languages Connect are now hiring a **Marketing and Social Media Coordinator**. Join an enthusiastic and hard-working team of education and marketing professionals who manage a wide-range of **events**, campaigns and resources for students, parents, teachers, guidance counsellors and principals, and work with third-level institutions to help **promote** the benefits of **foreign language** skills.

[Learn More](#)

Updates • Annual Reports available to view
• Japanese Language Advisor appointed

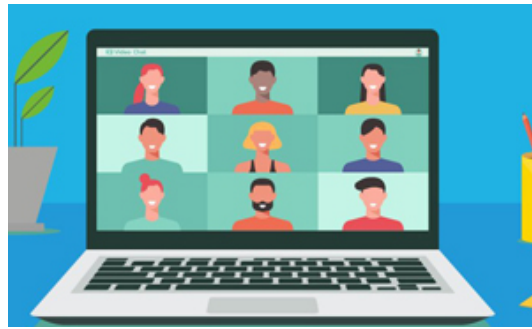


Upcoming



- [Communities of Practice](#)
Various dates, listed on our calendar

- January 10th/17th/24th 2022
- [FLA/CT Recipe for Success – Info Session: \(.German\) / \(.Spanish\)](#)
January 12th / 19th 2022
 - [Special CoP: LCA and MFL](#)
January 19th 2022
 - [FLA 2022/2023 Support Sessions 2](#)
January/February 2022
 - [Guidance & MFL Webinar](#)
February 1st 2022
 - [Digital Technology for MFL Teachers Webinar Series 2](#)
February 2nd/9th/16th 2022



Copyright © 2021 Post Primary Languages Ireland, All rights reserved.

Post Primary Languages Ireland
Floor 5, The Liberty Insurance Building
Navan Road
Dublin 15, D15 YT2H
Ireland

[Add us to your address book](#)

Want to change how you receive these emails?
You can [update your preferences](#) or [unsubscribe from this list](#).



An Roinn Oideachais
Department of Education